

# 9 DEALER MANUAL FOR SR PA051.12.S

---



## CONTENT

---

<b>9.1 Introduction of Sensor</b> .....	<b>2</b>
<b>9.2 Specifications</b> .....	<b>2</b>
9.2.1 Outline and geometric size.....	3
9.2.2 Cautions.....	4
<b>9.3 Sensor Installation</b> .....	<b>4</b>

# 9.1 INTRODUCTION OF SENSOR

---



- Name: Speed sensor
- Model: SR PA051.12.S
- The material of the speed sensor is PA66 + 30% GF and the material of cabling is PVC.

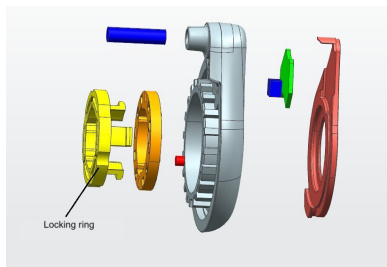
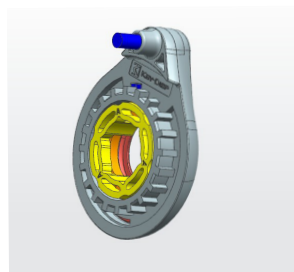
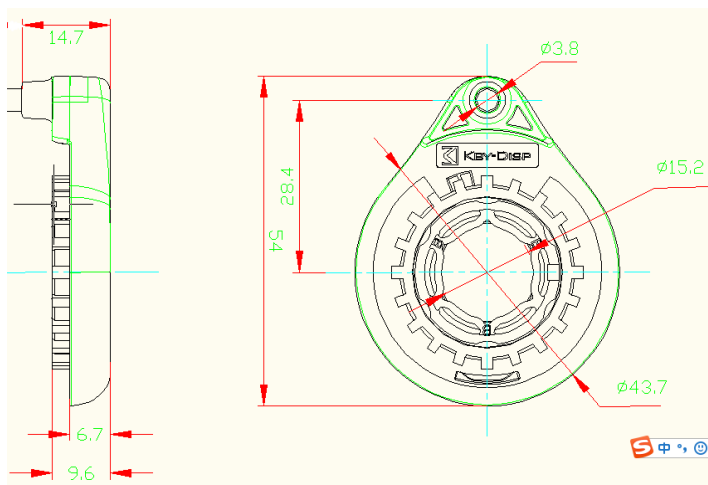
**i** The speed sensor is equipped with two halls, which is mounted on the left side of pedelec to monitor its real-time running status. Compared with other sensors, the sensor is equipped with 12 magnetic steel, which can provide 12 impulse signals per revolution with higher accuracy. The speed sensor is more easier to install and disassemble as it is integrated.

## 9.2 SPECIFICATIONS

Model: SR PA051.12.S

Rated Current (mA)	< 5
Outdoor Temperatures	-20 °C~60 °C
Shaft Diameter(mm)	15.6-15.9
Rated Voltage (V)	4.5-6
Impulses Per Revolution	12

### 9.2.1 Outline and geometric size



## 9.2.2 Cautions

- The pedelec should be stored in a ventilated dry room. Avoid storing the pedelec near strong magnetic objects.
- Should not be used for a long time overload.
- Should avoid wading to use.



Do not contact magnetic materials with products (mainly axes)



It is forbidden to be knocked during product transportation and installation.



At installation and disassembly it shall be carried out in accordance with the prescribed procedures to prevent break line.

## 9.3 SENSOR INSTALLATION

---

1. Insert the speed sensor into the main shaft through the mounting hole.

